

ACO pressurised watertight light shaft – installation with ACO Dichtfix sealing tape (Art. 35632)

ACO Dichtfix is suitable for installation on white tank. Processing temperature between +5 °C and 40 °C.

1. Check the light shaft for damage before installation. Light shafts with cracks, flaking or other damage are not suitable for pressurised watertight installation.
2. Use a broom or wide brush, for example, to clean the wall, remove release agent residue e.g. using a high-pressure cleaner or acetone, fill faulty spots on the wall using epoxy filling compound, smooth it and allow it to harden.



3. Insert the light shaft grating and fit the grating removal protection device. If necessary, close the draining opening using a ACO light shaft sealing cover or ACO pressurised watertight draining connection.



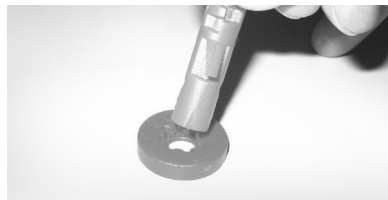
4. Determine the position of the light shaft, to do this hold the light shaft with the grating inserted against the wall and mark the position of the two top drillholes. The distance from the bottom edge of the window to the light shaft base should be ≥ 15 cm. Or use the ACO installation aid.

5. Drill all the additional fixing points open on the light shaft.

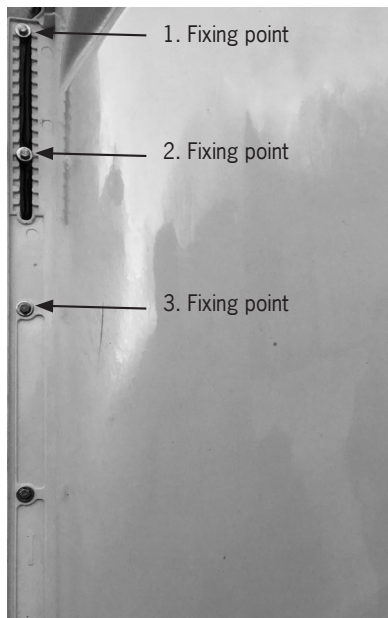


6. Drill the top two holes using a depth stop (7cm).

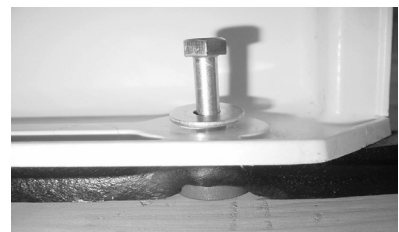
7. Hook the light shaft into place provisionally and screw hand-tight, then mark the rest of the holes to be drilled. Now remove the light shaft again and drill the rest of the drillholes using a depth stop (7cm). All the holes must be used! Clean the drilling dust off the wall and the drillholes.



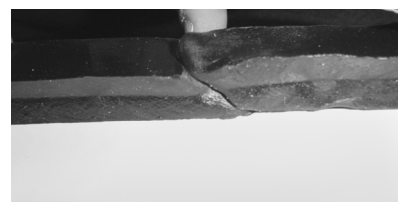
8. Place the plastic spacer discs on the anchor and insert into the drillholes.



9. Clean the light shaft flange. Place ACO Dichtfix centred over the fixing holes and press firmly in place. Make sure of good adhesion to the light shaft, in particular in the radius area of the light shaft. The fixing holes must be completely covered. Route the sealing tape along the inside of the rectangular holes. 2 screws must be fixed in each rectangular hole of the light shaft in depth 600 mm. The first screw at the upper end of the rectangular hole, the second screw centred between the first and third fixing point.



10. Fix the light shaft using the two upper screws. Insert the rest of the screws. Use a hammer to drive the screws through the sealing tape. Tighten the screws one after the other by hand. Tighten the screws again after approx. 1 hour. In doing so, press the Dichtfix to a thickness of about 5 mm.



11. At joints, ACO Dichtfix must be cut to a 45° angle and fitted overlapping.